

Clermont County Board of Developmental Disabilities

2012

Resource Directory

OUR MISSION

The mission of the Clermont County Board of Developmental Disabilities is to work in partnership with eligible individuals who have a developmental disability and empower them and their families to identify and support the choices they make about services. The development and allocation of agency resources will be based upon these choices.

*Clermont County Board of Developmental Disabilities
2040 US Highway 50
Batavia, OH 45103
513-732-7000
513-732-7006 (Fax)
www.Clermontdd.org*

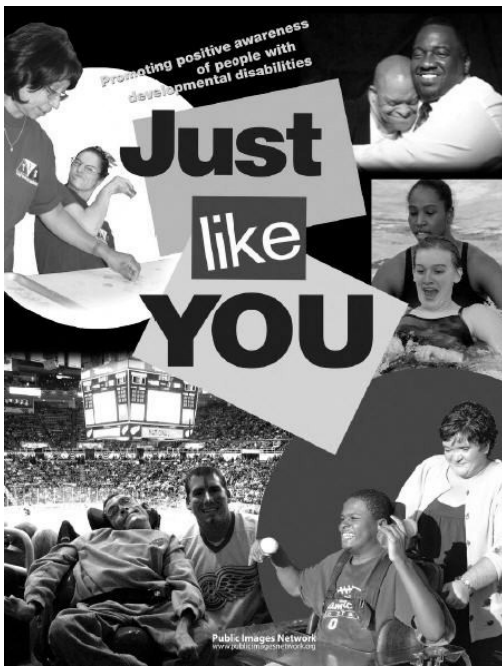
Introduction

The Clermont County Board of Developmental Disabilities Resource Directory has been designed to give you information about programs and services that are available in the Greater Cincinnati Area. This directory also shares specific information about the Clermont County Board of Developmental Disabilities, its programs and services, and where you can access important Developmental Disabilities information.

Included within this directory is a list of definitions that describe several common disabilities and disorders. It is our hope the contents of the Developmental Disabilities Resource Directory help guide you in a direction that is both beneficial and helpful to you, your family, or the people your organizations serves.

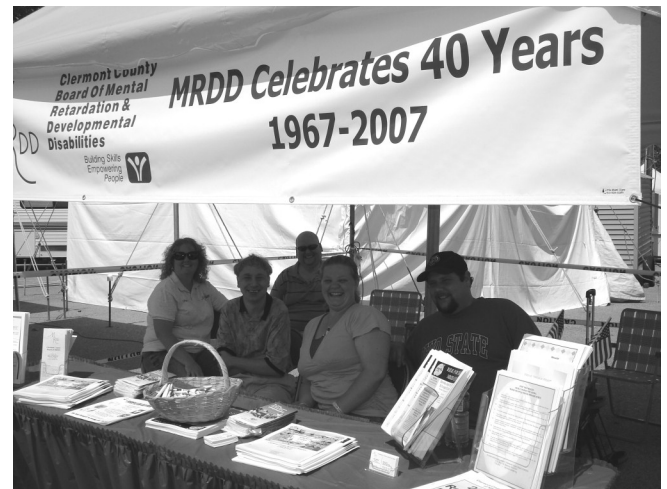
For more copies of the Clermont County Developmental Disabilities Resource Directory, call the Director of Community Relations at (513) 732-4921, or e-mail her at ldavis@clermontdd.org.





March is Developmental Disabilities Awareness Month

Each year, the Clermont County Board of Developmental Disabilities joins the State of Ohio in its celebration of Developmental Disabilities Awareness Month by planning several outstanding public events. Call 732-4921 for a copy of the May issue of *The Beacon* newsletter for highlights of this year's events. The current theme is "Just Like You."



Visit us at the Clermont County Fair

We are pleased to host three booths at the Clermont County Fair each year. The Clermont County DD is responsible for one informational booth and the paging booth (which handles announcements for the fairgrounds and public). The Clerco Café hosts a food booth each year, where patrons can pick up great sandwiches and treats.



October is National Disability Employment Awareness Month

Inclusion Awards are held each year in October at the Clermont County Board of Developmental Disabilities, as a way of recognizing the Clermont County businesses who hire consumers from the Community Employment Services Department each year. The theme for National Disability Employment Awareness Month is set by the US Department of Labor each year; the current theme is "America's People, America's Talent...America's Strength."

Information/Referral

If you need help finding the right service in the Clermont County Community or in the Developmental Disabilities Board program, call the Information and Referral Division at (513) 732-4831. If you are specifically interested in services for a child under the age of 3, you may also contact our Help Me Grow office at (513) 732-5030.



Clermont County Board of Developmental Disabilities

Information about services for children and adults with developmental disabilities

What We're All About

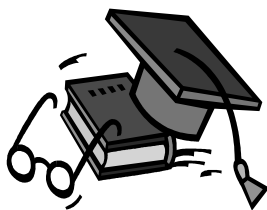
The Clermont County Board of Developmental Disabilities serves students and adults who have **Developmental Disabilities**. These services take place primarily in the Batavia and Owensville area, but can also be present in community settings. Below is a brief outline of programs:

A. Children's Services

The Thomas A. Wildey Center is located in Owensville and serves many age groups. The DD Early Intervention Program is located within this center and provides services to babies, birth to 3 years of age. When a child is born with a developmental delay or disability, he or she is referred to DD for Early Intervention Services. The child's family works with a team of DD staff which includes an Early Intervention Specialist and several therapists (occupational, physical, and speech. This team might also include a Parent Advisor from our Regional Infant Hearing Program, if the child is deaf or hard of hearing.) This team of staff visit the babies within his or her own home setting, until the child reaches 2-1/2 years old; it is then time for the child to get ready for pre-school, so the child joins a class at the Wildey Center to get ready for transition.



Also located at the Wildey Center is the Thomas A. Wildey School for children ages 6 through 21. These children are referred to DD by their local school district, because they have special needs that cannot be met within a typical classroom setting. The major emphasis of the school age program is promoting the independence of each student to the maximum extent possible. Community participation is stressed with the ultimate goal being eventual job placement. Students in this program also benefit from occupational, physical, and speech therapies, and have access to hydrotherapy in an indoor swimming pool, as well as adaptive physical education and vocational training.



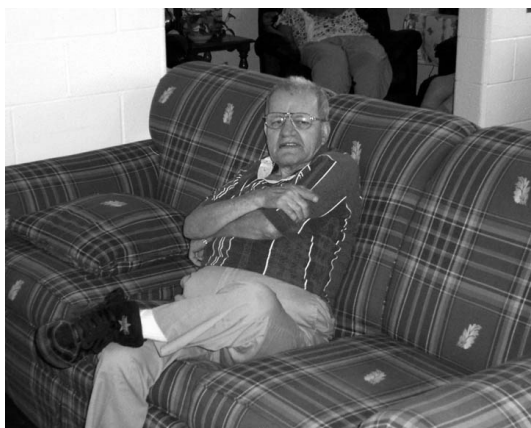
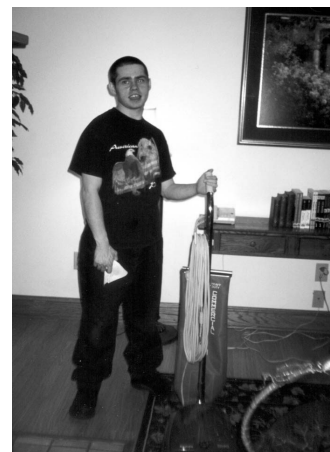
Once a child graduates from the Thomas A. Wildey School (or from a local school district), he or she has the opportunity to do much of the same things typical young adults experience: going to college, getting a job, gathering further vocational study. For someone who has a developmental disability, it becomes necessary to enlist the help of many people in order to reach maximum independence.

B. Adult Services

Two sheltered workshops are located in the Batavia area, to assist the individual to gain additional vocational training. The Grissom Building and Donald A. Collins Habilitation Center offer adults with disabilities the opportunity to earn a paycheck while continuing to develop necessary skills needed to gain community employment. The Adult Leisure Program moved to the Wildey Center in September, 2008 and serves as an activity center so that people have the opportunity to choose alternative activities to regular work environments.

The Community Employment Services Department serves adults who are actively seeking employment within the community. This division of the Developmental Disabilities program will meet with employers/business owners to inquire about open positions within their companies. Once an individual is matched with the job, staff from the Community Employment Services Department assist the individual with mock interviews. If the person is hired, a Job Coach works with the person to do the actual training. This happens because it might take someone 4-6 weeks to learn the job successfully (depending upon the work skills of the individual), and an employer does not always have staff available to do the training.

We also have many enclaves (or mobile work crews) who work as a team within a business or organization. Each team consists of 4-5 individuals who are supervised by an DD staff person. They complete the job according to what the business owner needs. Currently, we have enclaves that work at the following locations: The Sportsman's Market (Clermont County Airport), Bryan Equipment, the Clermont County Records Management Department and Country Inn & Suites Hotel. We also have a Lawn Crew who maintain cemeteries and ball fields in the Batavia area during the spring, summer, and fall months.



Retirement is something all senior citizens enjoy, and seniors with developmental disabilities are no exception. The DD Senior Retirement Program (for people ages 55 and up) is located at the Thomas A. Wildey Center gives seniors the opportunity to stay busy, remain connected to their friends, and attend community outings each week.

Other Areas

The Clermont County Board of Developmental Disabilities has many departments that work behind the scenes to ensure the safety and well-being of each individual served. **The Investigative Unit** tracks information on abuse and neglect cases that are reported by staff, providers, and the general public. **The Community Support Services Department** monitors all support and Medicaid-funded services, to ensure we are providing or contracting for services that meet and exceed all applicable federal, state, and local standards.

Our Service and Support Administration are social workers who assist the individual (or the individual's family) in acquiring specific services that fit the person's needs—for instance, the person may need help locating a physician, setting up a bank account, or may even need emergency housing. The **Business Operations Department** manages the Developmental Disabilities budget and financial aspect of the agency. This department is also in charge of all human resources for Developmental Disabilities employees, tracks employee training, supervises the maintenance and custodial programs in all four Developmental Disabilities facilities, and assists with compliance issues for state and federal surveys. The **Community Relations and Information Department** handles all public relations for the Developmental Disabilities agency, implements day, evening, and weekend activities for teenagers and adults, supervises approximately 250 volunteers, and handles all grant writing/fundraising ventures.

Grant Programs

The Clermont County Board of Developmental Disabilities is proud to work with **Help Me Grow**, a central intake site for all infants and toddlers (birth to 3) who are referred by physicians due to developmental delays or disabilities. This program is located at the Wildey Center.

We are also pleased to operate the **Regional Infant Hearing Program** to assist children (birth to 3) who are deaf or hard of hearing. This program is located in the Early Intervention wing of the Wildey Center, yet serves 9 counties in the southwestern corner of Ohio (Adams, Brown, Butler, Clermont, Clinton, Fayette, Hamilton, Highland, and Warren). The Clermont County Board of Developmental Disabilities is the *only DEVELOPMENTAL DISABILITIES program in the State of Ohio* to have been awarded this grant.

Families Connected of Clermont County is a support network for families that is operated through a grant from the Mental Health and Recovery Board. They produce workshops and seminars throughout the year for families in Clermont County, in the hopes of being that “first step” for families to discover they aren't alone.

This is just a quick glimpse of the services offered to by the Clermont County Board of Developmental Disabilities. For more information or for a program tour, please contact the Community Relations and Information Office at (513) 732-4921, ldavis@clermonddd.org.

Clermont County Board of
Developmental Disabilities
Members of the Board

Harry Snyder, President
Laurie Benintendi, Vice President
Kim Pellington, Secretary
Greg Carson
Shelia Madden
Jennifer Mailloux
Garrett Slone



Clermont County DD Disability Awareness Training

What is Disability Awareness Training?

In 2004, the Clermont County Board of Developmental Disabilities (DD) created a training curriculum to help people in the community learn about the DD program and experience what it feels like to have a disability. Through a short PowerPoint presentation, the group receives a course in Assistive Technology, learns what it means to speak "People First Language" and has the opportunity to "try on a disability."

This has proved to be a very successful training program for the Clermont County Board of Developmental Disabilities. Schools, church groups, Rotary Clubs, and many other organizations have had the opportunity to experience this curriculum over the past year and in July, 2005, the Clermont County Board of Developmental Disabilities received an Exemplary Status for this program from the CARF accreditation organization.

The great part about this curriculum is...it can fit into any class or group, regardless of time or size!

We can present this training to a group of 400 in a two-hour period of time, or spend one hour to train twenty people in a smaller group setting.

Whatever time you have to offer (day or evening), we can fit into it and help your group have a fun learning experience in the process!

Call our Community Relations Office at (513) 732-4921 to schedule a training time.

Curriculum Outline

- A. What is a *disability*?
- B. Developmental Disabilities Program Overview
- C. What is a *Developmental Disability*?
- D. Ten Rules for Communicating with Someone who has a Disability
- E. Adaptive Technology Overview—How to Adapt your Environment
- F. People First Language
- G. Try On a Disability
- H. Testimonials From People who are Served by the Developmental Disabilities Agency
- I. Handouts to Keep
- J. "Who I Am" video

Every Face in Our Community Belongs!



**Clermont County DD
Disability Awareness Training
(513) 732-4921
ldavis@clermonddd.org
www.clermonddd.org**

Commonly Recognized Developmental Disabilities, Disorders, and Delays

The Clermont County Board of Developmental Disabilities serves individuals who fit the following definition of a “developmental disability,” as defined in the Ohio Revised Code. For those individuals who don’t fit this category, the Intake and Eligibility Coordinator works to find resources within the community that better suits the individual’s needs.

Section 5123.011 of the Ohio Revised Code says the definition of a *developmental disability* is: “Substantial functional limitation,” “developmental delay,” and “established risk” have the meanings established pursuant to Section 5123.011 of the Ohio Revised Code. “Developmental disability” means a severe, chronic disability that is characterized by all of the following: (1) It is attributable to a mental or physical impairment or a combination of mental and physical impairments, other than a mental or physical impairment solely caused by mental illness as defined in division (A) of Section 5122.01 of the ORC; (2) It is manifested before age twenty-two; (3) it is likely to continue indefinitely; (4) It results in one of the following: a) in the case of a person under age three, at least one developmental delay or an established risk; b) in the case of a person at least age three but under age six, at least 2 developmental delays or an established risk; c) in the case of a person age six or older, a substantial functional limitation in at least three of the following areas of major life activity, as appropriate for the person’s age: self-care, receptive and expressive language, learning, mobility, self-direction, capacity for independent living, and if the person is at least age sixteen, capacity for economic self-sufficiency. (5) It causes the person to need a combination and sequence of special, interdisciplinary, or other type of care, treatment, or provision of services for an extended period of time that is individually planned and coordinated for the person.

Below are definitions of a few disorders, disabilities, and delays, taken from the American Heritage Dictionary (www.dictionary.com)

Autism

A pervasive developmental disorder characterized by severe deficits in social interaction and communication, by an extremely limited range of activities and interests, and often by the presence of repetitive, stereotyped behaviors. Usually commences before three years of age. One in 150 children are diagnosed with this disorder. Autism was first described by Leo Kanner (1894-1981), an Austrian-born US child psychiatrist, in 1943.

Cerebral Palsy

A disorder usually caused by brain damage occurring at or before birth and marked by muscular impairment. Often accompanied by poor coordination, it sometimes involves speech and learning difficulties.

Congenital Abnormality

A defect that is present at birth. Can be caused from a number of instances including chromosome abnormalities, genetic defects, environmental factors (infections-e.g. rubella), drugs given to the mother (e.g. thalidomide) or sporadic faults in development: these include the failure of testicles to descend, malformation of the heart, and short or rudimentary arms/legs.

Deaf or Hard of Hearing

Having a hearing loss. The person can be completely incapable of hearing (deaf) or have a diminished or defective sense of hearing (hard of hearing).

Down Syndrome

A congenital disorder, caused by the presence of an extra 21st chromosome, in which the affected person has mild to moderate mental retardation, short stature, and a flattened facial profile. Also called trisomy 21.

Epilepsy

Any of various neurological disorders characterized by sudden recurring attacks of motor, sensory, or psychic malfunction with or without loss of consciousness or convulsive seizures. A disorder of the nervous system, characterized either by mild, episodic loss of attention or sleepiness (**petit mal seizure**) or by severe convulsions with loss of consciousness (**grand mal seizure**).

Learning Disability

Any of various cognitive, neurological, or psychological disorders that impede the ability to learn, especially one that interferes with the ability to learn mathematics or develop language skills. Also called a learning disorder.

Mental Illness/Disorders

Mental disorders are common in the United States and internationally. An estimated 26.2 percent of Americans ages 18 and older — about one in four adults — suffer from a diagnosable mental disorder in a given year. Commonly recognized are Bipolar Disorder, Depression, Schizophrenia, Anxiety Disorders, Obsessive-Compulsive Disorders, and Post Traumatic Stress Disorder, to name a few. Not to be confused with *Mental Retardation*.

Mental Retardation—Now known as an Intellectual Disability

Subnormal intellectual development as a result of congenital causes, brain injury, or disease and characterized by any of various cognitive deficiencies, including impaired learning, social, and vocational ability. (Also called mental deficiency.) Not to be confused with *Mental Illness*.

Multiple Sclerosis

A chronic autoimmune disease of the central nervous system in which gradual destruction of myelin occurs in patches throughout the brain or spinal cord or both, interfering with the nerve pathways and causing muscular weakness, loss of coordination, and speech and visual disturbances.

Muscular Dystrophy

Any of a group of progressive muscle disorders caused by a defect in one or more genes that control muscle function and characterized by gradual irreversible wasting of skeletal muscle. Also known as Duchenne's Muscular Dystrophy...with this form, the muscle cell membrane lacks a specific protein (dystrophin) which normally prevents the muscle structure from being destroyed by its own contractions.

Orthopedic Impairment

Impairment of movement, speech, vision, and muscle use caused by birth defects, injury or disease.

Serious Emotional Disturbance

Diagnosable disorders in children and adolescents that severely disrupt daily functioning in the home, school, or community. Some of these disorders are depression, attention-deficit/hyperactivity, anxiety, conduct, and eating disorders. Serious emotional disturbances affect 1 in 20 young people.

Speech or Language Impairment

Speech and language disorders refer to problems in communication and related areas such as oral motor function. These delays and disorders range from simple sound substitutions to the inability to understand or use language or use the oral-motor mechanism for functional speech and feeding. Some causes of speech and language disorders include hearing loss, neurological disorders, brain injury, mental retardation, drug abuse, physical impairments such as cleft lip or palate, and vocal abuse or misuse. Frequently, however, the cause is unknown.

Spina Bifida

A congenital defect in which the spinal column is imperfectly closed so that part of the meninges or spinal cord protrudes, often resulting in hydrocephalus and other neurological disorders. Also called [*schistorrhachis*](#).

Tourette Syndrome

A severe neurological disorder characterized by multiple facial and other body tics, usually beginning in childhood or adolescence and often accompanied by grunts and compulsive utterances, as of interjections and obscenities. Also called *Gilles de la Tourette Syndrome*.

Tramatic Brain Injury

Brain damage from trauma. The three leading causes of death from traumatic brain injury relate to firearms, motor vehicles and falls. The leading causes of death differ by age group. Motor vehicles are the leading cause among youth from birth to 19 years of age. Firearms are the leading cause of death among persons aged 20 to 74 years. Falls are the leading cause of death among persons aged 75 and older.

Visual Impairment including Blindness

Impairment of the sense of sight.



Helpful Internet Web Sites

Alexander Graham Bell Association for the Deaf
www.agbell.org

American Academy of Audiology
www.audiology.com

American Academy of Pediatrics
www.aap.org

American Academy of Otolaryngology
Head and Neck Surgery
www.entnet.org

Auditory-Verbal International, Inc.
www.auditory-verbal.org

Cochlear Implant Association
www.cici.org

National Cued Speech Association
www.ingenweb.com/cuedspeech

Option Schools
www.oraldeafed.org

National Association for the Deaf
www.nad.org

Beginnings
www.beginningssvcs.com

Pediatric Advice and questions
www.drgreene.com

Easy to understand medical topics
www.dr4kids.com

Developmental needs
www.drmoknows.com

Child Care Aware
www.childcareaware.org

National Network for Child Care
www.nncc.org

Department of Health and Human Services
www.dhhs.gov

Department of Education
www.ed.gov/index.jsp

No Child Left Behind
www.nclb.gov/

Children's Defense Fund
www.childrensdefense.org

National Child Care Information Center
www.nccic.org

National Center for Early Development and Learning
www.ncedl.org

Head lice solutions
www.headliceinfo.com

Public television for children
www.pbskids.org

Advice on parenting, family crafts and recipes
<http://familyfun.go.com/>

Raising responsible children in today's world
www.youth-focus.com

The White House
www.whitehouse.gov

Raising kids and dealing with teenagers
www.parentsoup.com

Family health site: pregnancy, men's,
women's, and children's health
www.healthatoz.com

Residential Concepts, Inc.
www.residentialconcepts.org

Books of Interest by Clermont County Authors:

Appelmann, Larry E. *“Living with Spina Bifida;
Speaking Out About My Disability”* Available
through Amazon.com and Trafford Publishing
(Trafford.com)

Craver, Diane *“Celebrating and Caring For Your Ba-
by With Special Needs”* Available at
www.booklocker.com/books/1480.html and
www.dianecraver.com

THINK “PEOPLE FIRST”

LANGUAGE IS A REFLECTION OF HOW PEOPLE SEE EACH OTHER. THAT’S WHY THE WORDS WE USE CAN HURT. IT’S ALSO WHY RESPONSIBLE COMMUNICATORS ARE NOW CHOOSING LANGUAGE WHICH REFLECTS THE DIGNITY OF PEOPLE WITH DISABILITIES—WORDS THAT PUT THE PERSON FIRST, RATHER THAN THE DISABILITY. READ ON FOR A SHORT COURSE ON USING LANGUAGE THAT EMPOWERS!

THINK “PEOPLE FIRST.” SAY “A WOMAN WHO HAS MENTAL RETARDATION,” RATHER THAN “A MENTALLY RETARDED WOMAN.”

AVOID WORDS LIKE “UNFORTUNATE,” “AFFLICTED,” AND “VICTIM.” ALSO, TRY TO AVOID CASTING A PERSON WITH A DISABILITY AS A SUPERHUMAN MODEL OF COURAGE. PEOPLE WITH DISABILITIES ARE JUST PEOPLE, NOT TRAGIC FIGURES.

A DEVELOPMENTAL DISABILITY IS NOT A DISEASE. DO NOT MENTION “SYMPTOMS,” “PATIENTS,” OR “TREATMENT,” UNLESS THE PERSON YOU’RE WRITING ABOUT HAS AN ILLNESS AS WELL AS A DISABILITY.

USE COMMON SENSE. AVOID TERMS WITH OBVIOUS NEGATIVE OR JUDGMENTAL CONNOTATIONS, SUCH AS “CRIPPLED,” “DEAF AND DUMB,” “LAME,” AND “DEFECTIVE.” IF YOU AREN’T SURE HOW TO REFER TO A PERSON’S CONDITION, ASK. AND, IF THE DISABILITY IS NOT RELEVANT TO YOUR STORY OR CONVERSATION, WHY MENTION IT AT ALL?

NEVER REFER TO A PERSON AS “CONFINED TO A WHEELCHAIR.” WHEELCHAIRS ENABLE PEOPLE TO ESCAPE CONFINEMENT. A PERSON WITH A MOBILITY IMPAIRMENT “USES” A WHEELCHAIR.

TRY TO DESCRIBE PEOPLE WITHOUT DISABILITIES AS “TYPICAL” RATHER THAN “NORMAL.”

FOR MORE INFORMATION, CALL THE CLERMONT COUNTY BOARD OF DEVELOPMENTAL DISABILITIES AT (513) 732-4921 (LDAVIS@CLERMONTDD.ORG).

The contents of this flyer were produced by Ohio Public Images/Public Images Network, a not-for-profit communications and advocacy organization promoting positive awareness of people with disabilities. For more information, call (937) 898-8828 (voice/TDD).



TEN SIMPLE RULES FOR COMMUNICATING WITH PEOPLE WITH DISABILITIES

- I. When talking with a person with a disability, speak directly to that person rather than through a companion or sign language interpreter.
- II. When introduced to a person with a disability, always offer to shake hands when introduced. People with limited hand use or who wear an artificial limb can usually shake hands.
- III. When meeting a person with a visual impairment, always identify yourself and others who may be with you.
- IV. If you offer assistance, wait until the offer is accepted. Then, listen to or ask for instructions.
- V. Treat adults as adults. Address people who have disabilities by their first names only when extending that same familiarity to all others present.
- VI. Leaning or hanging on a person's wheelchair is similar to leaning or hanging on that person, and is generally considered annoying. Remember: people who use wheelchairs treat their chairs as an extension of their bodies.
- VII. Listen attentively when you're talking with a person who has difficulty speaking. Be patient and wait for the person to finish, rather than correcting or speaking for the person.
- VIII. When speaking with a person in a wheelchair, place yourself at eye level in front of the person to facilitate the conversation.
- IX. To get the attention of a person who is deaf or hard of hearing, tap the person on the shoulder or wave your hand. Look directly at the person and speak clearly, slowly, and expressively to establish if the person can read your lips.
- X. Relax! Don't be embarrassed if you happen to use accepted, common expressions such as, "See you later," or "Did you hear about this," that seem to relate to the person's disability.



Numbers at a Glance

AGENCIES

A Caring Place Pregnancy Help Center, Inc.	753-HELP (4357)
Abilities First Foundation (513)	423-9496
Adult Protective Services	732-7173
Alcoholism Council of the Cincinnati Area	281-7880
Alzheimer's Assoc. Cinti. Chapter	721-4284
American Cancer Society	891-1600
American Foundation for Suicide Prevention of Greater Cincinnati	752-7040
American Heart Assoc.	281-4048
American Lung Assoc.	985-3990
American Red Cross	943-6600
ARC Clermont/Brown	752-4330
ARC/Hamilton County	821-2113
Arthritis Foundation	271-4545
Audiology/Eastgate	636-6028
Autism Society Greater Cin.	561-2300
Axis Ctr Public Aware	(800)231-2947
Battered Women's Shelter	753-7281
Beech Acres	231-6630
Beech Acres Parenting Info. Line	624-3400
Better Business Bureau	421-3015
Big Brothers/Big Sisters	421-4120
Board of Health-Clermont Co.	732-7499
Boys & Girls Club	553-0188
Brain Injury Assoc. of Ohio	542-2704
BCMh (Bureau for Children with Medical Handicaps)	735-8989
Bureau of Vocational Rehab	752-6444
BWRC	943-3000
Camp Allyn	732-0240
Cancer Center	474-6907
C.A.R.S.	732-2277
CASA for Clermont Kids	735-7233
Center for Independent Living Options	241-2600
Chamber of Commerce	576-5000
Child Advocacy Center	621-3032
Child Focus	752-1555
Child Support Enforcement	732-7326

Cincinnati Assoc for Blind	221-8558
Cincinnati Center for Development & Behavioral Pediatric Clinic	636-4611
Cincinnati Kidney Foundation	961-8105
Cincinnati Therapeutic Riding/Horsemanship	831-7050
Cincinnati Speech and Hearing	947-8470
Clermont Counseling Center	947-7000
Clermont County Board DD	732-7000
Clermont Cty Early Intervention	732-7026
Clermont County General Health District	735-7499
Clermont Mercy Hospital	732-8200
EMERGENCY	732-8354
Psychiatry	732-8539
Clermont Recovery Center	735-8100
Clermont Senior Services	724-1255
Clermont Community Services	732-2277
Deaf Kids Club	(614) 841-1991
Dept of Jobs & Family Services	732-7340
Down Syndrome Assoc.	761-5400
Easter Seal Society	821-9890
Epilepsy Foundation	721-2905
Every Child Succeeds	636-2830
4C for Children	221-0033
Families Connected	732-5034
Families with ASD	444-4979
Family Link Line	281-2273
Family Planning & Prenatal	752-1910
Fernside	745-0111
FIN Facts Magazine	(877) 372-7368
Glad House, Inc.	641-5530
Governor's Council on people with disabilities	(800) 282-4536
Habitat for Humanity	831-0272
Head Start	528-7224
Healthy Moms and Babies	591-5600
HEAP	732-2277
Help Me Grow	732-5030
Homeless Shelter	732-6464
Housing Opportunities Made Equal	721-4663
HUD	684-3451
Inclusion Network	345-1330

Lawyer Referral	732-2050
Legal Aid	732-2422
Literacy Council	Clermont/Brown 943-3740
Low Income Housing	732-6010
Man Power	733-8655
Meals on Wheels	724-1255
Medicare Information	1-800-282-0530
Mental Health & Recovery	732-5400
Mental Health Assoc. of Southwest OH	721-2910
Mercy Hospital Clermont Behavior Med. Dept.	732-8630
NAMI	528-5500
Natural Ties	621-3032
National MS Society	769-4400
Ohio Civil Rights Commission	852-3344
Ohio DD Council	(614) 446-5205
Ohio Literacy Network	(800) 228-7323
Parents without Partners	241-4744
Planned Parenthood	752-1910
Poison Control	558-5111
Project EVEN START	528-7224
Public Library Admin Office	732-2736
Recreation Unlimited	(740) 548-7006
Residential Concepts, Inc.	724-3841
Runaway Hotline	(800) 621-4000
Salvation Army	732-6241
S.E.R.R.C (Ohio)	563-0045
Stepping Stones Center	831-4660
St. Joseph's Orphanage	(859) 647-7220
Family Ties Therapeutic Foster Care	
St. Vincent DePaul Organization	
Holy Trinity	732-2040
St. Andrews	831-3353
St. Ann	724-7684
St. Bernadette	753-5566
St. Columbian	683-0105
St. E. Seton	575-0119
St. Louis	732-2218
St. Mary's	734-4041
St. Peter	553-3267
St. Veronica	528-1622
United Cerebral Palsy/Cinci	221-4606
United Way	536-3000
United Way 2-1-1	2-1-1
Victim/Witness Assistance	732-7112
WIC (Women, Infants, and Children)	732-7329
YMCA	724-9622

TRANSPORTATION

Clermont Connections	732-7433
Cincinnati Metro	621-9450
Clermont Senior Services	724-1255
C.A.R.S.	732-2277
Medicaid Transportation	521-4799

MEDICAL PROFESSIONALS

DERMATOLOGY

Everett L. Jones	831-8087
Fixler Dermatology, Inc.	831-3003

EAR NOSE & THROAT

Allied ENT Institute	732-3100
Mark Mandell-Brown, Inc.	984-4700

EYECARE

Cincinnati Eye Institute	732-3279
Cincinnati Eye Physicians, Inc.	232-5550
	or 732-1718

FAMILY PRACTICE

Goshen Family Practice	575-1444
------------------------	----------

GENERAL SURGERY

Robert A. Baker	734-4818
Jesus C. Hontanosas	831-2929
	or 732-8491

INTERNAL MEDICINE

Infection Disease Consult.	624-0999
J. Mehta, M.D.	724-2226
Mercy Medical Associates	734-6979
Mercy Medical Associates	831-1640

ORTHOPEDICS

Eastern Cinci Orthopedics	732-6001
Southern Ohio Sports Med.	489-4663
	474-3012

PEDIATRICS

Clermont Pediatrics	732-7190
Eastgate Pediatric Center	753-2820
Englander, Sper, & Drasnin	248-1210

PHYSICAL THERAPY

Comprehensive PT Center	576-6338
-------------------------	----------

PODIATRY

Ronda Bennett	489-5533
Center of Foot & Ankle	831-7503
Foot & Ankle Center	528-4580
Robert J. Herbst	753-9948
Podiatry Health Care	474-4450
	or 793-5524
	or 321-8231
Pradip Seth	489-5533

PSYCHIATRY

Kode Murthy	831-3000
-------------	----------

URGENT CARE

Doctor's Urgent Care	831-8555
----------------------	----------

DEVELOPMENTAL DISABILITIES SERVICES

Sharon Woodrow, Superintendent

P.O. Box 156
Batavia, OH 45103
513-732-7000

CENTRAL ADMINISTRATION (513) 732-7000

Lisa Davis Director of Community Relations	732-4921
Jodie Jones Investigative Agent	732-4830
Sharon Richmond Director of Community Support Services	732-4840
David Sininger Director of Business Operations	732-4924
Maureen Serbu Assistant Director of Business Operations	732-4891

CHILDREN'S SERVICES

Jay Williams School Principal	732-4970
Beth Popich Director of Early Childhood Services	732-4960
Help Me Grow Ron Halcomb Program Coordinator	732-5033
Regional Infant Hearing Program Main Office	732-7033
Thomas A. Wildey School 2040 St. Rt. 50 P. O. Box 8 Owensville, OH 45160	

ADULT SERVICES

Grissom Building 4231 Grissom Drive P. O. Box 156 Batavia, OH 45103	Donald A. Collins Hab. Center 4275 Armstrong Blvd. P.O. Box 156 Batavia, OH 45103
--	--

Employment Services 4231 Grissom Drive P.O. Box 156 Batavia, OH 45103	Wildey Adults 2040 St. Rt. 50 P.O. Box 156 Batavia, OH 45103
--	---

Education and Training Resources

Adult Basic & Literacy Education

(A.B.L.E.)	735-8300
Batavia Local School District	732-2343
Bethel-Tate Local School	734-2238
Clermont/Brown Cty Literacy	943-3740
Clermont County Board of DD	732-7000
Clermont-Northeastern Local	625-5478
Diamond Oaks	574-1300
Felicity-Franklin Local School	876-2113
Goshen Board of Education	722-2222
Grant Career Center	734-6222
Job Corps	651-2000
Laurel Oaks	(937) 382-1411
Live Oaks	575-1900
Milford Exempted School	831-1314
New Richmond School	553-2616
Ohio Bureau of Employment	732-1564
Scarlet Oaks	771-8810
St. Rita School for the Deaf	771-7600
Sylvan Learning Center	943-2622
UC Clermont College	732-5200
West Clermont Local School	943-5000
Williamsburg Schools	724-3077
Wildey School	732-7015



Services in the Greater Cincinnati Area

If you need help finding the right service in the Clermont County Community or in the DD Board program, call the Information and Referral Division at **(513) 732-4831**. If you are specifically interested in services for a child under the age of 3, you may also contact our Help me

A

A CARING PLACE PREGNANCY HELP CENTER, INC.

4446 Mt. Carmel-Tobasco Road
Cincinnati, OH 45244
www.pregnancyohio.com (513) 753-4357

ABILITIES FIRST FOUNDATION

4710 Timber Trail Drive
Middletown, OH 45044-5399
www.abilities.org (513) 423-9496

ADULT PROTECTIVE SERVICES

2400 Clermont Center Drive
Batavia, OH 45103 (513) 732-7173

ALCOHOLISM COUNCIL OF THE CINCINNATI AREA

2828 Vernon Place
Cincinnati, OH 45219
www.alcoholismcouncil.org (513) 281-7880

ALZHEIMER'S, CINCINNATI CHAPTER

644 Linn Street Suite 1026
Cincinnati, OH 45203
www.alz.org (513) 721-4284

AMERICAN CANCER SOCIETY

Park 50 Tech Center
5400 DuPont Circle Suite J
Milford, OH 45150
www.cancer.org (513) 965-0026

AMERICAN FOUNDATION FOR SUICIDE PREVENTION OF GREATER CINCINNATI

www.afsp.org 1-800-273-8255
Crisis Line

AMERICAN HEART ASSOCIATION

2936 Vernon Place
Cincinnati, OH 45219
www.americanheart.org (513) 281-4048

AMERICAN LUNG ASSOCIATION

11113 Kenwood Road
Cincinnati, OH 45242
www.lungusa.org (513) 985-3990

AMERICAN RED CROSS

4530 Eastgate Blvd.
Cincinnati, OH 45245
www.redcross.org (513) 943-6600

ANCHORING FAMILIES TOGETHER (AFT)

2403 Auburn Avenue
Cincinnati, OH 45219 (513) 562-3100

ARC OF HAMILTON COUNTY

801 A West 8th Street
Suite 400
Cincinnati, OH 45203 (513) 821-2113
www.archamilton.org

ARTHRITIS FOUNDATION

7811 Laurel Avenue
Cincinnati, OH
www.arthritis.org (513) 271-4545

AUDIOLOGY/EASTGATE

796 Cincinnati Batavia Pike
Cincinnati, OH 45245
www.chmcc.org (513) 636-6028

AUTISM SOCIETY OF GREATER CINCINNATI

8120 Maxfield Lane
Cincinnati, OH 45243
www.autismcincy.org (513) 561-2300

AXIS CENTER FOR PUBLIC
Awareness of People with Disabilities
4550 Indianola Avenue
Columbus, OH 43214
www.axiscenter.org 1-800-231-2947

Bicycle Helmet Safety Institute
www.bhsi.org

Head Injury Hotline (Seattle)
www.headinjury.com/brain

Post trauma treatment, advanced neurotherapy
www.post-trauma.com

B

BATTERED WOMEN'S SHELTER
55 South 4th Street
Batavia, OH 45103 (513) 753-7281

BUREAU OF VOCATIONAL REHAB
756 Old St. Rt. 74 #B
Cincinnati, OH 45245
www.state.oh.us/rsc (513) 752-6444

BEECH ACRES
6881 Beechmont Avenue
Cincinnati, OH
www.beachacres.org (513) 231-6630

BCMh
(Bureau for Children with Medical Handicaps)
3000 Hospital Drive
Batavia, OH 45103 (513) 735-8989

BETTER BUSINESS BUREAU
898 Walnut Street 4th Floor
Cincinnati, OH 45202
www.cincinnatibbb.org (513) 421-3015

BWRC Workforce One
(Business & Workforce Resource Center of Clermont County)
756 Old State Rt. 74
Cincinnati, OH 45245
www.clermontbwrc.com (513) 943-3000

BIG BROTHER/BIG SISTERS
2400 Reading Road
Cincinnati, OH 45202
www.bigforkids.org (513) 421-4120

C

BOARD OF HEALTH
2275 Bauer Road
Batavia, OH 45103
www.clermonthelthdistrict.org (513) 732-7499

CAMELOT CARE
2245 Gilbert Ave. Suite 100
Cincinnati, OH 45206
www.camelotcare.com (513) 961-5900

BOYS & GIRLS CLUB OF CLERMONT
212 Market Street
New Richmond, OH 45157 (513) 553-0188
www.thepositiveplace4kids.org

CAMP ALLYN
1414 Lake Allyn Road
Batavia, OH 45103 (513) 732-0240

BRAIN INJURY ASSOC. OF OHIO
Peggy O'Neill
C/O Hamilton Co. Board of Developmental
Disabilities
4210 Dane Street
Cincinnati, OH 45223
www.aitken.org (513) 542-2704

CANCER FAMILY CARE
8595 Beechmont Ave. Suite 107
Cincinnati, OH 45255
www.cancerfamilycare.org (513) 474-6907

American Speech, Language and
Hearing Association www.asha.org

CAPABILITIES UNLIMITED, INC.
2495 Erie Avenue
Cincinnati, OH 45208
1-800-871-2181

Traumatic Brain Injury Links, many links
www.aspi.net/users/lisa/tbi.htm

C.A.R.S. (Clermont Auto Recycling Service)
3003 Hospital Drive
Batavia, OH 45103
www.ccesi.org (513) 732-2277

C.A.R.H (Clermont Adult Residential Homes)
Quehl Home **Hensgen Home**
1710 St. Rt. 50 648 Old Rt. 52
Batavia, OH 45103 New Richmond, OH 45157
(513) 407-5922

CAREGIVER ASSISTANCE NETWORK (CAN)
100 E. 8th St.
Cincinnati, OH 45202 (513) 929-4483

CASA FOR CLERMONT KIDS
313 E. Main Street
Batavia, OH 45103
www.casaforclermontkids.com (513) 735-7233

**CCHMC DIVISION OF ADOLESCENT
MEDICINE**
3333 Burnett Ave.
Cincinnati, OH 45229 (513) 636-7615

CENTER FOR CHILDREN & FAMILIES
4760 Madison Road
Cincinnati, OH 45227
www.ccfohio.org (513) 321-8286

**CENTER FOR INDEPENDENT
LIVING OPTIONS, INC**
632 Vine Street Suite 601
Cincinnati, OH 45202
www.cilo.net (513) 241-2600

**CENTER FOR DEVELOPMENTAL AND
BEHAVIORAL PEDIATRIC CLINIC (Children's
Hospital)**
3333 Burnet Avenue 636-4611
Cincinnati, OH 45229
www.cincinnatichildrens.org/svc/alpha/disabilities/
default.htm (look under services)
Jack Rubinstein Library—Research Library for
Developmental Disabilities-Located on 2nd Floor at
Sabin Ed. Center 636-4626 Open to Public

CENTRAL CLINIC
311 Albert Sabin Way
Cincinnati, OH 45229
www.centralclinic.org (513) 558-5823

CENTRAL COMMUNITY HEALTH BOARD
532 Maxwell Avenue
Cincinnati, OH 45219 (513) 559-2000

CHADD (children & adults with attention deficit disorder)
735 Reading Rd.
Mason, OH 45040 (513) 459-6080

CHAMBER OF COMMERCE (Clermont)
555 Chamber Pike
Milford, OH 45150
www.clermontchamber.com (513) 576-5000

CHILD ADVOCACY CENTER
1821 Summit Road
Cincinnati, OH 45237 (513) 821-2400

CHILD FOCUS
555 Cincinnati-Batavia Pike
Cincinnati, OH 45244
www.child-focus.org (513) 688-8280

CHILDREN'S HOME
5050 Madison Road
Cincinnati, OH 45227
www.thechildrenshomecinti.org (513) 272-2800

CHILDREN'S HOSPITAL MEDICAL CENTER
3333 Burnet Avenue
Cincinnati, OH 45229-3039
www.cincinnatichildrens.org (513) 636-4200

CHILDREN'S PROTECTIVE SERVICES
2400 Clermont Center Drive
Batavia, OH 45103 (513) 732-7173

**CINCINNATI ASSOCIATION FOR THE BLIND &
VISUALLY IMPAIRED**
2045 Gilbert Avenue
Cincinnati, OH 45202
www.cincyblind.org (513) 221-8558

CINCINNATI COUNSELING SERVICE, INC.
5936 Glenway Ave.
Cincinnati, OH 45238 (513) 922-1660

CINCINNATI KIDNEY FOUNDATION
2200 Victory Parkway Suite 510
Cincinnati, OH 45206
www.kidneycincinnati.org (513) 961-8105

CINCINNATI THERAPEUTIC RIDING AND HORSEMANSHIP INC. (CHILDRESS RODGERS STABLES)
1632 Apgar Road
Milford, OH 45150
www.crh-horse.org (513) 831-7050
Barn (513) 575-2194

CINCINNATI METRO
1014 Vine Street Suite 200
Cincinnati, OH 45202
www.sorta.com (513) 621-9450

CLERMONT COUNSELING SERVICES
43 E. Main Street
Amelia, OH 45102 (513) 947-7000
www.clermontcounseling.org

CLERMONT COUNTY BOARD OF DEVELOPMENTAL DISABILITIES
P.O. Box 156
Batavia, OH 45103
www.clermontdd.org (513) 732-7000

CLERMONT COUNTY COMMUNITY SERVICES, INC.
3003 Hospital Drive
Batavia, OH 45103 (513) 732-2277
www.cccsi.org

CLERMONT COUNTY ADULT PROBATION
270 E. Main Street
Batavia, OH 45103 (513) 732-7265

CLERMONT COUNTY FAMILY & CHILDREN FIRST COUNCIL
1088 Wasserman Way Suite B
Batavia, OH 45103 (513) 732-5412

CLERMONT COUNTY MENTAL HEALTH AND RECOVERY BOARD
1088 Wasserman Way Suite B
Batavia, OH 45103 (513) 732-5400
www.ccmhrb.org

CLERMONT TRANSPORTATION CONNECTION
4440 St. Rt. 222
Batavia, OH 45103 (513) 732-7433
http://ctc.clermontcountyohio.gov

CLERMONT SENIOR SERVICES
2085-A Front Wheel Drive
P.O. Box 118
Batavia, OH 45103
www.clermontseniors.com (513) 724-1255

CLERMONT COUNTY EARLY INTERVENTION
P.O. Box 8
Owensville, OH 45160 (513) 732-7026

CLERMONT COUNTY GENERAL HEALTH DISTRICT- NURSING DIVISION
3000 Hospital Drive
Batavia, OH 45103 (513) 735-8989

CLERMONT MERCY HOSPITAL
3000 Hospital Drive
Batavia, OH 45103
www.mercyhealthpartners.org (513) 732-8200
Emergency (513) 732-8354
Psychiatry (513) 732-8539

CLERMONT RECOVERY CENTER
1088 Wasserman Way
Batavia, OH 45103
www.recoveryctr.org (513) 735-8100

CLOVERNOOK CENTER FOR THE BLIND & VISUALLY IMPAIRED
7000 Hamilton Ave.
Cincinnati, OH 45231
www.clovernook.org (513) 522-3860

CONSUMER NETWORK
2340 Auburn Avenue 2nd Floor
Cincinnati, OH 45219 (513) 221-7755

CORE BEHAVIORAL HEALTH CENTERS
5837 Hamilton Avenue
Cincinnati, OH 45224 (513) 541-7577

COUNCIL ON AGING OF SOUTHWESTERN OHIO
175 Tri County Parkway
Cincinnati, OH 45246
www.help4seniors.org (513) 721-1025

COUNSELING SOURCE, INC., THE
10921 Reed Hartman Highway Suite 133
Cincinnati, OH 45242 (513) 984-9838

COURT CLINIC

909 Sycamore Street Suite 400
Cincinnati, OH 45202 (513) 651-9300

CROSSROADS CENTER, THE

311 Martin Luther King Drive
Cincinnati, OH 45219 (513) 475-5300

D**DEAF KIDS & TEENS CLUB**

Deaf Services Center , Inc.
5858 North High Street
Worthington, OH 43085
www.dsc.org (614) 841-1991

DEPARTMENT OF JOBS & FAMILY SERVICES

2400 Clermont Center Drive
Batavia, OH 45103
www.clermontcountyohio.gov (513) 732-7340

DOOR TO DOOR ASSISTED TRANSPORTATION

(513) 931-6505

DOWN SYNDROME ASSOCIATION

1821 Summit Road Suite 102
Cincinnati, OH 45237
www.dsagc@aol.com (513) 761-5400

E**EASTER SEAL SOCIETY**

231 Clark Road
Cincinnati, OH 45215
www.swohio.easterseals.com (513) 821-9890

EPILEPSY FOUNDATION OF GREATER CINCINNATI

3 Centennial Plaza
895 Central Avenue
Suite 550
Cincinnati, OH 45202
www.cincinnatipilepsy.org (513) 721-2905

F**4C...FOUR CHILDREN**

1924 Dana Avenue
Cincinnati, OH 45207 (513) 221-0033

FAMILIES WITH ASD

5989 Meijer Dr. Ste 9
Milford, OH 45150 (513) 444-4979
www.familieswithasd.org

FAMILIES CONNECTED OF CLERMONT COUNTY

Willey School
2040 State Route 50
Owensville, OH 45160 (513) 732-5034

FAMILY SERVICE OF THE CINCINNATI AREA

205 W. 4th Street
Cincinnati, OH 45202 (513) 381-6300

FAMILY & CHILDREN FIRST

2400 Clermont Center Drive Suite 106
Batavia, OH 45103 (513) 732-7640

FAMILY HEALTH CONNECTIONS

1088 Wasserman Way, Suite B
Batavia, OH 45103 (513) 732-5412

FAMILY PLANNING & PRENATAL

Planned Parenthood Association
834 Ohio Pike
Cincinnati, OH 45245
www.plannedparenthood.org (513) 752-1910

FERNSIDE /Center for Grieving Children

4380 Malsbary Road Suite 300
Cincinnati, OH 45242
www.fernside.org (513) 745-0111

FIN FACTS**EXCEPTIONAL PARENT MAGAZINE**

555 Kinderkamack Road
Oradell, NJ 07649-1517
www.exceptionalparent.com 1-877-372-7368

G**G & D ALTERNATIVE LIVING, INC**

P.O. Box 341 121 Charles Street
Sardinia, Ohio 45171 (937) 446-2803
www.gdalternativeliving.net
gdalternative@verizon.net

G.L.A.D. HOUSE, INC.

4721 Reading Road Building A
Cincinnati, OH 45237 (513) 641-5530

GOVERNOR'S COUNCIL ON PEOPLE WITH DISABILITIES

1-800-282-4536

GREATER CINCINNATI BEHAVIORAL HEALTH SERVICES

1322 East McMillian Street
Cincinnati, OH 45206
www.gcbhs.com (513) 354-7000

GROWTHWAYS

201 Mound Avenue
Milford, OH 45150 (513) 831-0525

H

HAMILTON COUNTY ADULT PROBATION COURT

800 Broadway
Cincinnati, OH 45202 (513) 852-8900

HAMILTON COUNTY FAMILY & CHILDREN FIRST COUNCIL

125 E. Court Street, Suite 350
Cincinnati, OH 45202
www.hamilton-co.org/hcfcfc (513) 946-4990

HAMILTON COUNTY JUVENILE COURT-HILLCREST SCHOOL

246 Bonham Road
Cincinnati, OH 45215 (513) 552-1290

HAMILTON COUNTY JUVENILE COURT-YOUTH CENTER

2020 Auburn Avenue
Cincinnati, OH 45219 (513) 946-2800

HEAD START

555 Cincinnati Batavia Pike
Cincinnati, OH 45244
www.childfocus.org (513) 528-7224

HEALTHY MOMS AND BABES

2270 Banning Road, Suite 200
Cincinnati, OH 45238 (513) 591-5600

HEAP

2400 Clermont Center Drive
P.O. Box 103
Batavia, OH 45103 (513) 732-7182

HEALTH RESOURCE CENTER

112 E. Liberty Street
Cincinnati, OH 45210 (513) 357-4602

HELP ME GROW

P.O. Box 8
Owensville, OH 45160
www.clermonthelpmegrow.com (513) 732-5030

HEARING SPEECH & DEAF CENTER OF GREATER CINCINNATI

Eastgate Office
4440 Glen Este Withamsville Road Suite 475
Cincinnati, OH 45245 Fax (513)947-8428
www.hearingspeechdeaf.com (513) 947-8470

HOUSING OPPORTUNITIES MADE EQUAL (HOME)

2400 Reading Road, Suite 404
Cincinnati, OH 45202 (513) 721-4663

HUD

Housing on Urban Development
15 East 7th Street
Cincinnati, OH 45202 (513) 684-3451
www.hud.gov

I

IKRON REHABILITATION CENTER

2347 Vine Street
Cincinnati, OH 45219 (513) 621-1117

INCLUSION NETWORK

312 Walnut Street Suite 3600
Cincinnati, OH 45202
www.inclusion.org (513) 287-6530

INTER PARISH MINISTRIES

3509 Debolt Road
Cincinnati, OH 45244 (513) 561-3932

J

JEWISH FAMILY SERVICES

11223 Cornell Park Dr.
Cincinnati, OH 45242
www.jfscinti.org (513) 469-1188

JEWISH VOCATIONAL SERVICE

4300 Rossplain Rd.
Cincinnati, OH 45236 (513) 985-0515

L

LAWYER REFERRAL SERVICES

Clermont County Bar Association
270 Main Street
Batavia, OH 45103 (513) 732-2050

LEGAL AID

250 East 9th Street Suite 200
Cincinnati, OH 45202
www.lascinti.org (513) 732-2422

LEGAL AID SOCIETY OF GREATER CINCINNATI

215 E 9th St.
Suite 200
Cincinnati, OH 4522 (513) 241-9400

LEUKEMIA AND LYMPHOMA SOCIETY

2300 Wall St.
Suite H
Cincinnati, OH 45212
www.lls.org/soh (513) 361-2100

LIGHTHOUSE YOUTH SERVICES

1501 Madison Road
Cincinnati, OH 45206 (513) 221-3350

LINDNER CENTER OF HOPE

4075 Old Western Row
Mason, Oh 45040
www.lindnercenterofhope.org (513) 536-HOPE

LITERACY COUNCIL

of Clermont/Brown Counties
756 Old St. Rt. 74
Cincinnati, OH 45245
www.clermontbrownliteracy.org (513) 943-3740

LOW INCOME HOUSING

65 South Market Street
Batavia, OH 45103
www.clermontmha.org (513) 732-6010

M

MEDICAID TRANSPORTATION

8222 Galbraith Point Lane Suite E
Cincinnati, OH 45231 (513) 521-4799

MENTAL HEALTH ACCESS POINT (MHAP)

311 Albert Sabin Way
Cincinnati, OH 45229 (513) 558-8888

MENTAL HEALTH ASSOCIATION OF SOUTHWEST OHIO

2400 Reading Road, Suite 412
Cincinnati, OH 45202
www.mentalhealthassn.org (513) 721-2910

MERCY HOSPITAL CLERMONT BEHAVIOR MEDICINE DEPARTMENT

3000 Hospital Drive
Batavia, OH 45103 (513) 732-8630

MULTIPLE SCLEROSIS (National)

Society SW Ohio/Northern Kentucky
4460 Lake Forest Drive Suite 236
Cincinnati, OH 45242
www.fightmstoday.org (513) 769-4400

N

NAMI-CLERMONT COUNTY

4030 Mt. Carmel Tobasco Rd.
Suite 125
Cincinnati, OH 45255
www.nami-cc.org (513) 528-5500

NEW HOUSING OPPORTUNITIES, INC.

3550 Grant Ave.
Lebanon, OH 45036
www.newhousingopp.org (513) 336-8897

NORCEN BEHAVIORAL HEALTH SYSTEMS

PNC Bank Building
7162 Reading Road, 5th Floor
Cincinnati, OH 45237 (513) 761-6222

NORTHLAND

50 Techne Center Dr.
Suite B5
Milford, OH 45150
www.northlandmbs.com (513)753-9964

O

OHIO DEPARTMENT OF DEVELOPMENTAL DISABILITIES

1810 Sullivant Avenue
Columbus, OH 43223-1239
www.ododd.state.oh.us (614) 466-0129

OHIO DEVELOPMENTAL DISABILITIES COUNCIL

8 East Long Street 12th Floor
Columbus, OH 45215
www.state.oh.us/ddc (614) 466-5205

OHIO LITERACY NETWORK

1500 West Lane Avenue
Columbus, OH 43221
www.ohioliteracynetwork.org 1-800-228-READ

OHIO WOMEN WITH DISABILITIES

4368 Dublin Road
Columbus, OH 43221 (614) 876-7090

P

PARENTS WITHOUT PARTNERS

Cincinnati Chapter 203
P.O. Box 141076
Cincinnati, OH 45250-1076
www.pwp203.org (513) 241-4744

THE PARTNERSHIP FOR MENTAL HEALTH, INC.

300 Hospital Dr.
Batavia, OH 45103
www.partnershipformentalhealth.org (513) 732-8558

PHOENIX PLACE

4 Cecelia Dr.
Amelia, OH 45102
www.thephoenixplace.org (513) 752-6170

PLANNED PARENTHOOD

834 Ohio Pike
Cincinnati, OH 45245
www.plannedparenthood.org (513) 752-1910

PLANNED PARENTHOOD OF SOUTHWEST OHIO

2314 Auburn Ave.
Cincinnati, OH 45219
www.plannedparenthood.org-swoh/ (513) 721-7635

PREGNANCY CENTER OF CLERMONT

1676 State Route 125
Amelia, OH 45102 (513) 753-7677

PROJECT SUCCESS/EVEN START

A Division of Child Focus
555 Cincinnati-Batavia Pike
Cincinnati, OH 45244
www.child-focus.org (513) 525-7224

PSYCHIATRIC EMERGENCY SERVICES

231 Bethesda Avenue, ML 559
Cincinnati, OH 45267 (513) 584-8577

Mobile Crisis Unit

234 Goodman Avenue
Cincinnati, OH 45219 (513) 584-5098

R

RECREATION UNLIMITED

7700 Piper Road
Ashley, OH 43003
www.recreationunlimited.org (740) 548-7006

RESIDENTIAL CONCEPTS, INC.

Adult Day Support Program
4073 Tollgate Road
Batavia, OH 45103
www.residentialconcepts.org (513) 724-3841

S

SALVATION ARMY

600 Kilgore Street
Batavia, OH 45103 (513) 732-6241 (or)
Family Services Bureau (513) 732-6328

SALVATION ARMY

114 E. Central Parkway
Cincinnati, OH 45210 (513) 762-5618

SOCIAL SECURITY ADMINISTRATION

Batavia, OH 45103
www.socialsecurity.gov 1-800-772-1213

SPECIALIZED ALTERNATIVES FOR YOUTH

(SAFY) of America
260 Northland Boulevard
Cincinnati, OH 45246 1-800-532-7239

STEPPING STONES CENTER

5650 Given Road
Cincinnati, OH 45243
www.steppingstonescenter.org (513) 831-4660

ST. ALOYSIUS ORPHANAGE

4721 Reading Road
Cincinnati, OH 45237
www.staloyusincincinnati.org (513) 242-7600

ST. JOSEPH ORPHANAGE

5400 Edalbert Drive
Cincinnati, OH 45239
www.stjosephorphanage.org (513) 741-3100

SUMMIT BEHAVIORAL HEALTH/COMMUNITY SUPPORT NETWORK (CSN)

1101 Summit Road
Cincinnati, OH 45237 (513) 948-3350

T

TALBERT HOUSE

2600 Victory Parkway
Cincinnati, OH 45206
www.talberthouse.org (513) 751-7747

281-CARE
3891 Reading Road
Cincinnati, OH 45229

TENDER MERCIES

27 West 12th Street
Cincinnati, OH 45202
www.tendermerciesinc.org (513) 721-8666

U

UNITED CEREBRAL PALSY OF CINCINNATI

3601 Victory Parkway
Cincinnati, OH 45229
www.ucpa.org (513) 221-4606

UNITED WAY 211/GREATER CINCINNATI

2400 Reading Rd.
Cincinnati, OH 45202
www.uwgc.org 211

UNITED WAY & COMMUNITY CHEST

2085- A Front Wheel Drive
Batavia, OH 45103
www.uwgc.org (513) 536-3000

UNIVERSITY AFFILIATED CINCINNATI CENTER FOR DEVELOPMENTAL DISORDERS (UACDD)

Interface Program
3333 Burnet Avenue
Cincinnati, OH 45229
www.cincinnatichildrens.org/affiliates/74/index.asp
(513) 636-4639

W

WIC

(Women Infants & Children)
2400 Clermont Center Drive
Batavia, OH 45103 (513) 732-7329

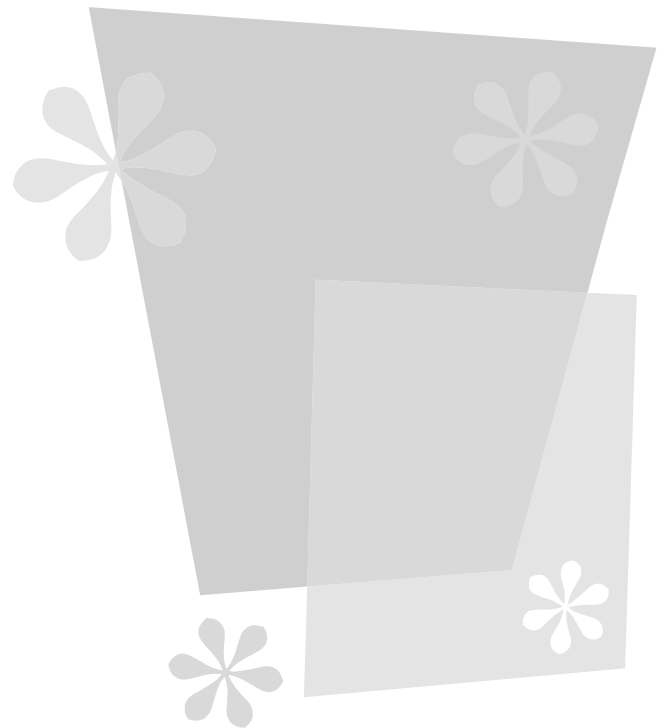
Y

YMCA

2075 Front Wheel Drive
Batavia, OH 45103
www.cincinnatiymca.org (513) 724-9622

YWCA

55 South Fourth Street
Batavia, OH 45103
www.ywcacincinnati.org (513) 732-0450



Thoughts From Jennifer Leon

2005 MS Leaders of Hope Winner

In dealing with MS, it seemed sometimes that it was the people closest to me who knew least about my daily struggles. I needed a way to help them understand that even though I may look physically “normal” that there was often physical pain that went unmentioned and emotional needs that went unmet.

With a close group of friends I had a small get-together. Everyone had to bind their feet with rope, so that they could move, but had a hard time balancing, much like people with MS. Then we put five to ten pounds weights on each arm, because with the fatigue that’s how heavy your arms can feel with MS. Then we took rubber bands and wrapped them around fingers and hands, because that is how it feels for a person with MS that deals with spasticity. Then the group attempted small everyday tasks—like button a shirt, tie their shoes, write a note, etc. “Now,” I said, “try to think of the physical pain that accompanies all of this. You may look at me everyday and not see rope around my feet, or rubber bands on my fingers, but that is often how I feel.” By the end of the session my friends were in tears—they finally understood what it’s like to live with MS.

I shared this idea with an instructor of mine at the local university a few years back who taught a class called ‘The Psychology of Disability’. After hearing the idea, he shared it with a few students that were presenting on the topics of MS. The students did a very similar experiment that allows the other students the experience to know, if only for a moment, what it is like to live with MS. And now, even when I’m at work and hear “Wow, but you look so normal! I would have never guessed you had MS!”, I calmly reply, “Come here, and let me put this rubber band around your fingers!”

Recreation Programs and Parks near Clermont County

Recreation Programs

Art Beyond Boundaries

1410 Main Street
Cincinnati, OH 45202
www.artbeyondboundaries.org 513-421-8726

Fishing Has No Boundaries

11990 Springdale Lake Drive
Cincinnati, OH 45246
www.fhnbcinti.com 513-777-4854
513-671-3343

Camp ASL

12142 Westerly Drive
Cincinnati, OH 45231
www.campasl.org 513-365-3159

Gorman Heritage Farm

10052 Reading Road
Evendale, OH 45241
www.gormanfarm.org/index.htm 513-563-6663

Center for Independent Living Options

632 Vine Street, Suite 305
Cincinnati, OH 45202
www.cilo.net 513-241-2600

Leap Beyond Therapy

6915 Beechmont Avenue
Cincinnati, OH 45230
www.leapbeyondtherapy.com 513-232-LEAP

Challenger Basketball –Butler County

626 Westridge Drive
Hamilton, OH 45013
www.bcchallenger.org 513-896-9855

M.E. Lyons YMCA

YMCA of Greater Cincinnati
8108 Clough Pike
Cincinnati, OH 45244
www.cincinnatiymca.org/locations/melyons/
index.shtml 513-474-1400

Chapter Two Book Club of Hamilton County

beth.lunesman@hamilton-co.org 513-559-6687
513-559-6672

Clermont Family YMCA

YMCA of Greater Cincinnati
2075 James E. Sauls Sr. Drive
Batavia, OH 45103
www.cincinnatiymca.org/locations/clermontfamily/
index.shtml 513-724-9622

Midwest Cheer Elite

9677 Cincinnati-Dayton Road
West Chester, OH 45069
www.midwestcheerelite.com 513-779-9111

Constant Companions

2860 Cooper Rd.
Evendale, OH 45241 513-469-2359

Stepping Stones

5650 Given Road
Cincinnati, OH 45243
www.stepsstonescenter.org 513-831-4660

Visionaries and Voices

225 Northland Boulevard
Cincinnati, OH 45246
www.visionariesandvoices.com 513-771-2999

Parks

Anderson Park District

8249 Clough Pike
Cincinnati, OH 45244-2746
www.andersonparks.com 513-474-0003

East Fork State Park

3294 Ellick Rd.
Bethel, OH 45106
http://www.dhr.state.oh.us 513-734-4323

Clermont County Park District

2228 US Highway 50
Batavia, OH 45103 513-732-2977
http://parks.clermontcountyohio.gov

Sharon Woods Park

11450 Lebanon Rd.
Cincinnati, OH 45241
www.hailtoncountyparks.org 513-563-4513

Cincinnati Nature Center

4949 Tealtown Rd.
Milford, OH 45150
www.cincynature.org 513-831-1711

Winton Woods/Parkys Farm

10245 Winton Rd.
Cincinnati, OH 45231
www.hamiltoncountyparks.org 513-521-3276

Long Branch Farm & Trails

6926 Gaynor Rd.
Goshen, OH 45122

Rowe Woods

4949 Tealtown Rd.
Milford, OH 45150

Cincinnati Recreation Commission

805 Central Ave. Suite 800
Cincinnati, OH 45202
www.cincinnati-oh.gov 513-352-4000

Cincinnati Therapeutic Riding & Horsemanship

1342 St. Rt. 50
Milford, OH 45150
www.crh-horse.org 513-831-7050





*Would
someone*

What can a person with a developmental disability do?

Win a race...bake chocolate chip cookies...be a good neighbor...fall in love...give a speech...walk in the woods...vote...take a taxi...retire from work...learn to ski...throw a party...cry at weddings...read a novel...ride the bus...make a mistake...report the news...worship...play Chinese checkers...create works of art...hug a friend...buy a house...sing in a choir...hit a home run...volunteer...cook linguini...star in a play...ride an elevator...rock a baby...go to the movies...wash the car...rake the leaves...grow prize-winning tomatoes...earn a paycheck!

Explore the Possibilities!

MISSION STATEMENT

The mission of the Clermont County Board of Developmental Disabilities is to work in partnership with eligible individuals who have a developmental disability and empower them and their families to identify and support the choices they make about services. The development and allocation of agency resources will be based upon these choices.

PHILOSOPHY

Individuals and families served by the Clermont County Board of Developmental Disabilities have the right of choice and flexibility regarding what, how and where services are provided. Individuals and families will be empowered to make decisions, become partners and work cooperatively with professionals, and exert control over the services provided to them.

WE BELIEVE that children with developmental disabilities have the right to participate in a student-centered, individualized educational experience which begins at birth and provides regular interaction with peers who do not have disabilities.

WE BELIEVE that educational services will honor the informed choice of the individual or individual's family.

WE BELIEVE that adults with developmental disabilities have the right to make choices regarding their lifestyle, their working environment and their living arrangements.

WE BELIEVE in providing adequate information, training and experience to make informed choices.

WE BELIEVE that adults have the right to work in the community in accessible workplaces, with access to the supports necessary to be successful and the right to wages and benefits provided to other workers in the same setting, including health insurance, unemployment compensation, retirement benefits and paid vacation time.

WE BELIEVE that persons who, either by their choice or because of the nature of their disability do not work competitively, have the right to spend their days involved in activities of interest and benefit to them in integrated, community-based settings.

WE BELIEVE such activities might include volunteering their time and energy in helping others, as well as participating in other activities they find personally beneficial.

WE BELIEVE that persons with developmental disabilities have the right to live in typical neighborhood homes and apartments, with persons of their choice.

WE BELIEVE that persons with developmental disabilities have the right to be assisted in purchasing or leasing places of their own and the right to select their own services and service providers.

WE BELIEVE that persons with developmental disabilities have the right to receive the full range of supports and services they want and need to be participating members of their communities, including transportation, recreation, social outlets and friends.